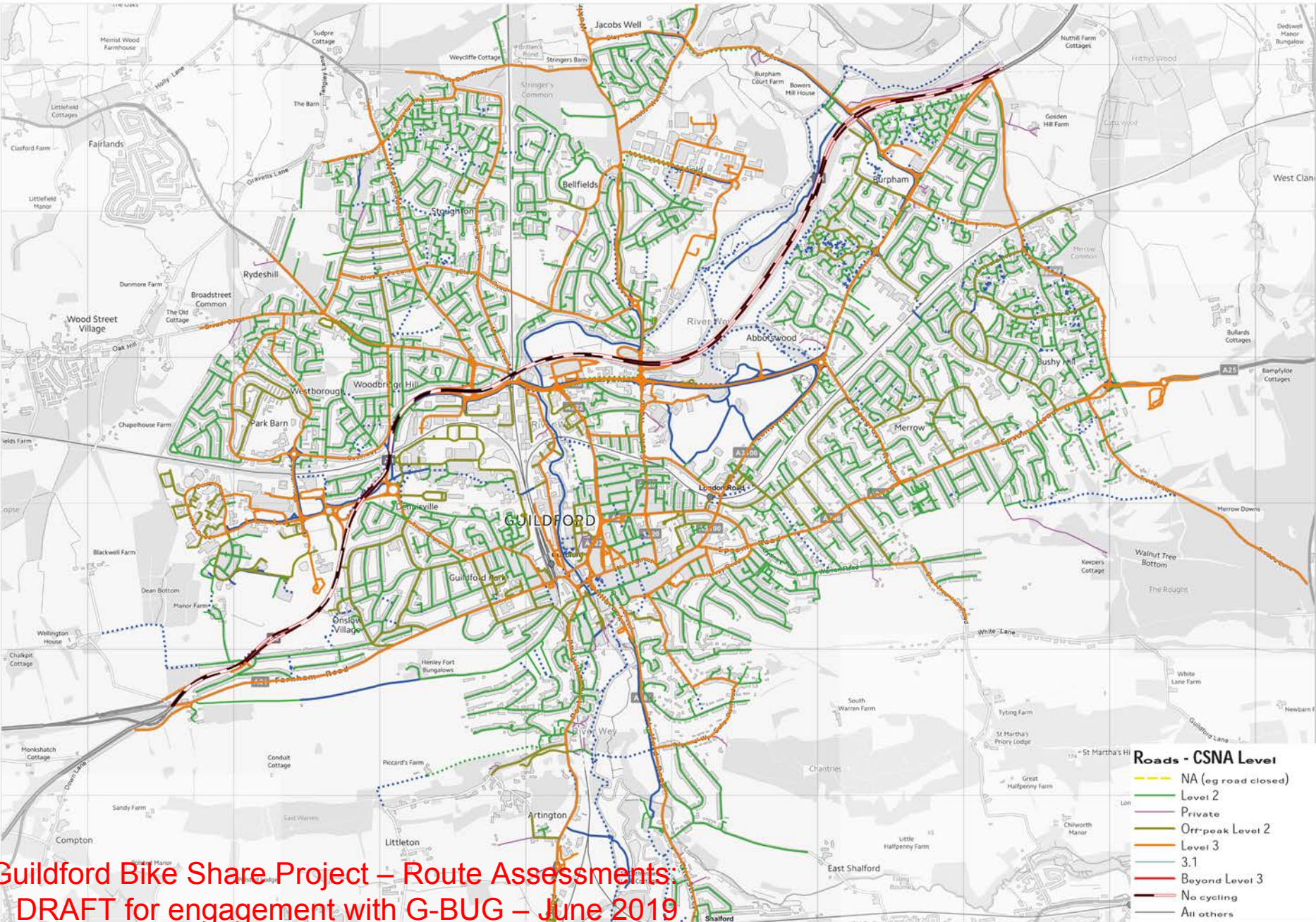


A map of Guildford, UK, overlaid with a network of red lines representing proposed cycle routes. The routes are numbered with integers from 1 to 14. The map also shows green lines representing existing greenways and grey lines for roads. The text 'Guildford Cycle Network' is centered over the map in a large, bold, black font.

Guildford Cycle Network

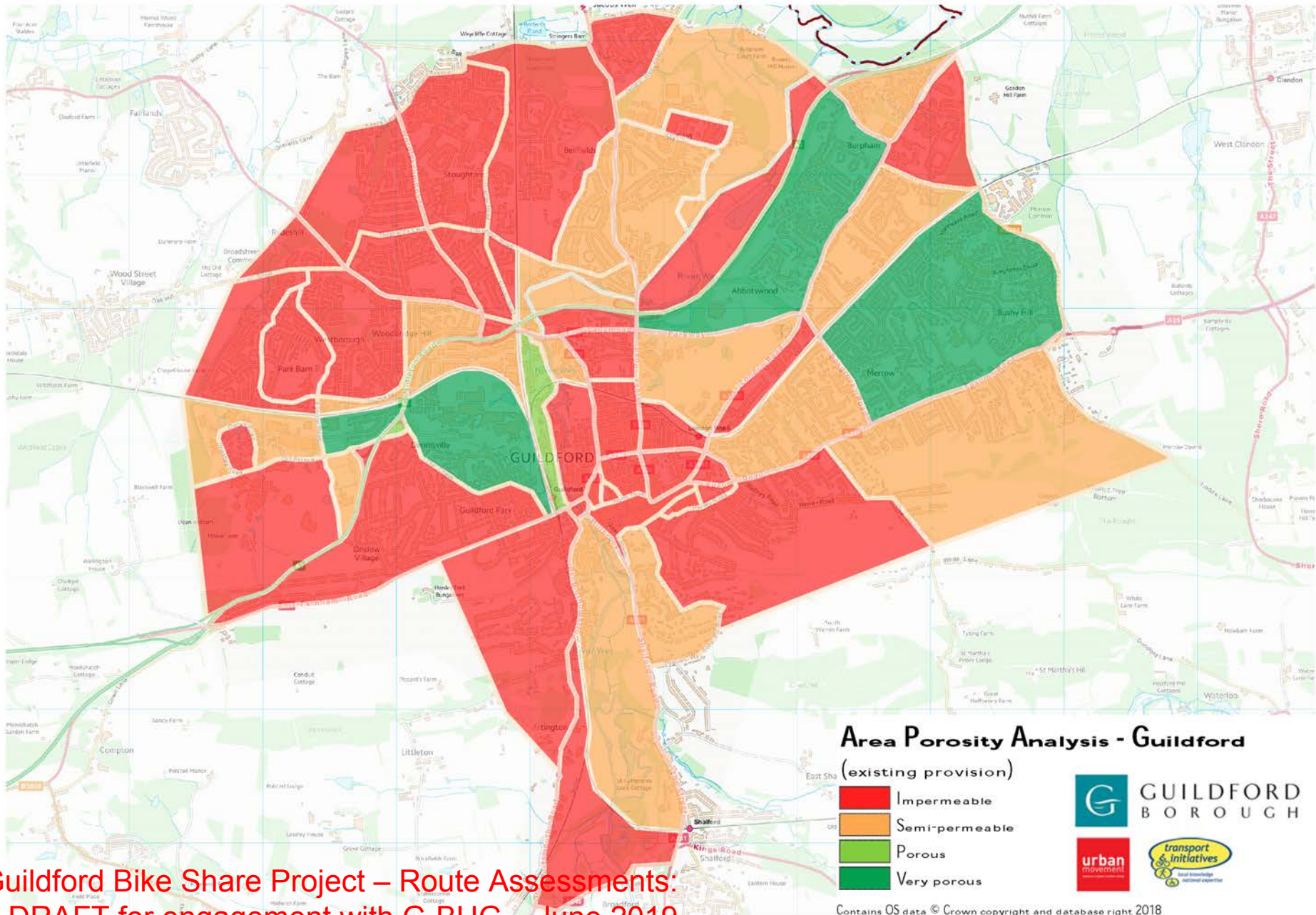
Urban Movement – Amy Priestley
Transport Initiatives – Ken Spence

Bikeability assessment



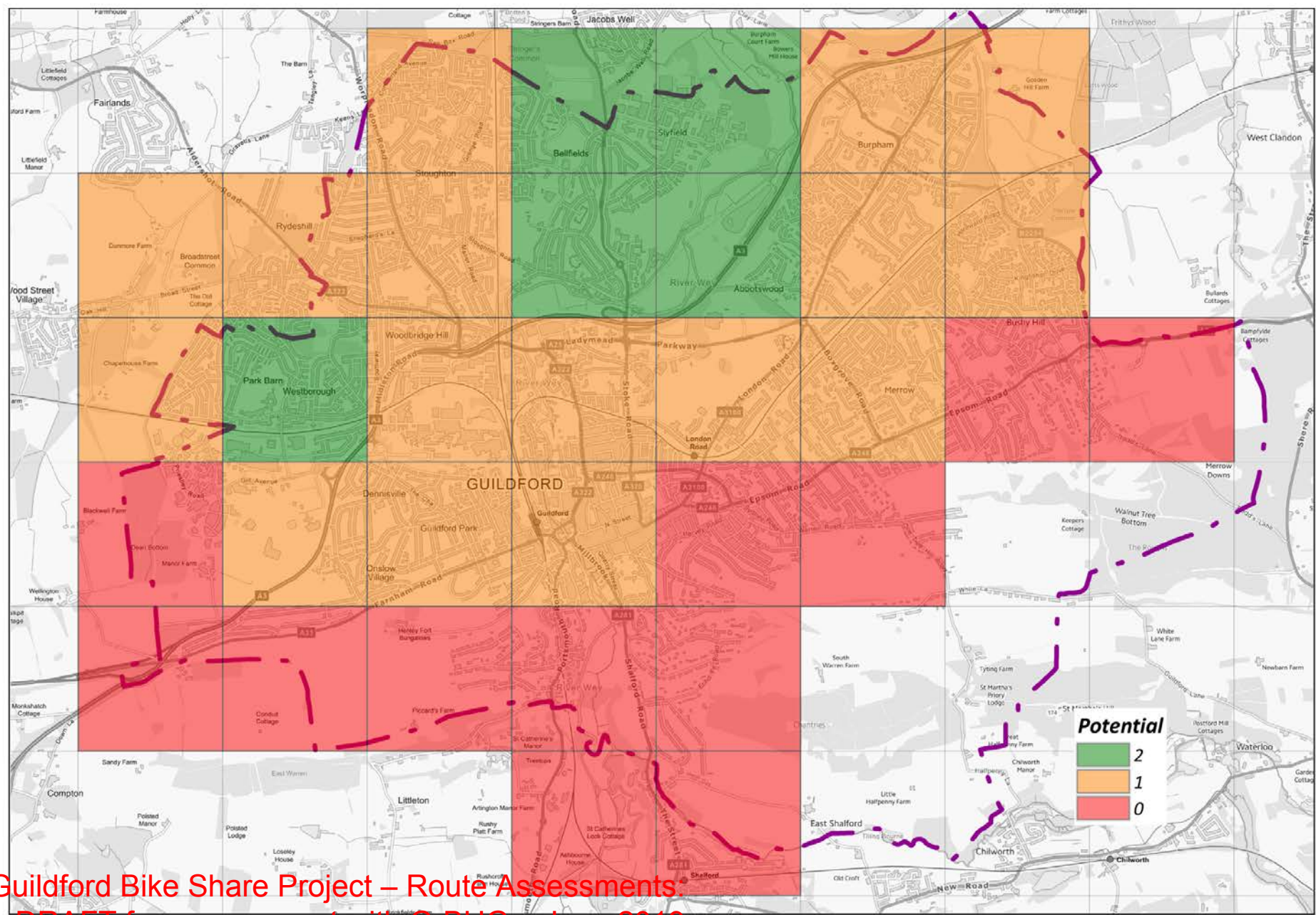
Guildford Bike Share Project – Route Assessments:
DRAFT for engagement with G-BUG – June 2019

Porosity



Guildford Bike Share Project – Route Assessments:
DRAFT for engagement with G-BUG – June 2019

Cycling potential



Guildford Bike Share Project – Route Assessments
DRAFT for engagement with G-BUG – June 2019

Principles and opportunities

Direct

Useful

Not too steep

Coherent

Safe (from traffic)

Attractive

Well connected

Feasible

Comfortable

Safe (from crime)

A network for what?

- Utility
 - Getting to work
 - Getting to school
 - Getting to college/university

 - Going shopping
 - Visiting friends/family
 - Visiting local attractions and events

 - Making deliveries/pick-ups
 - Making business trips/visits

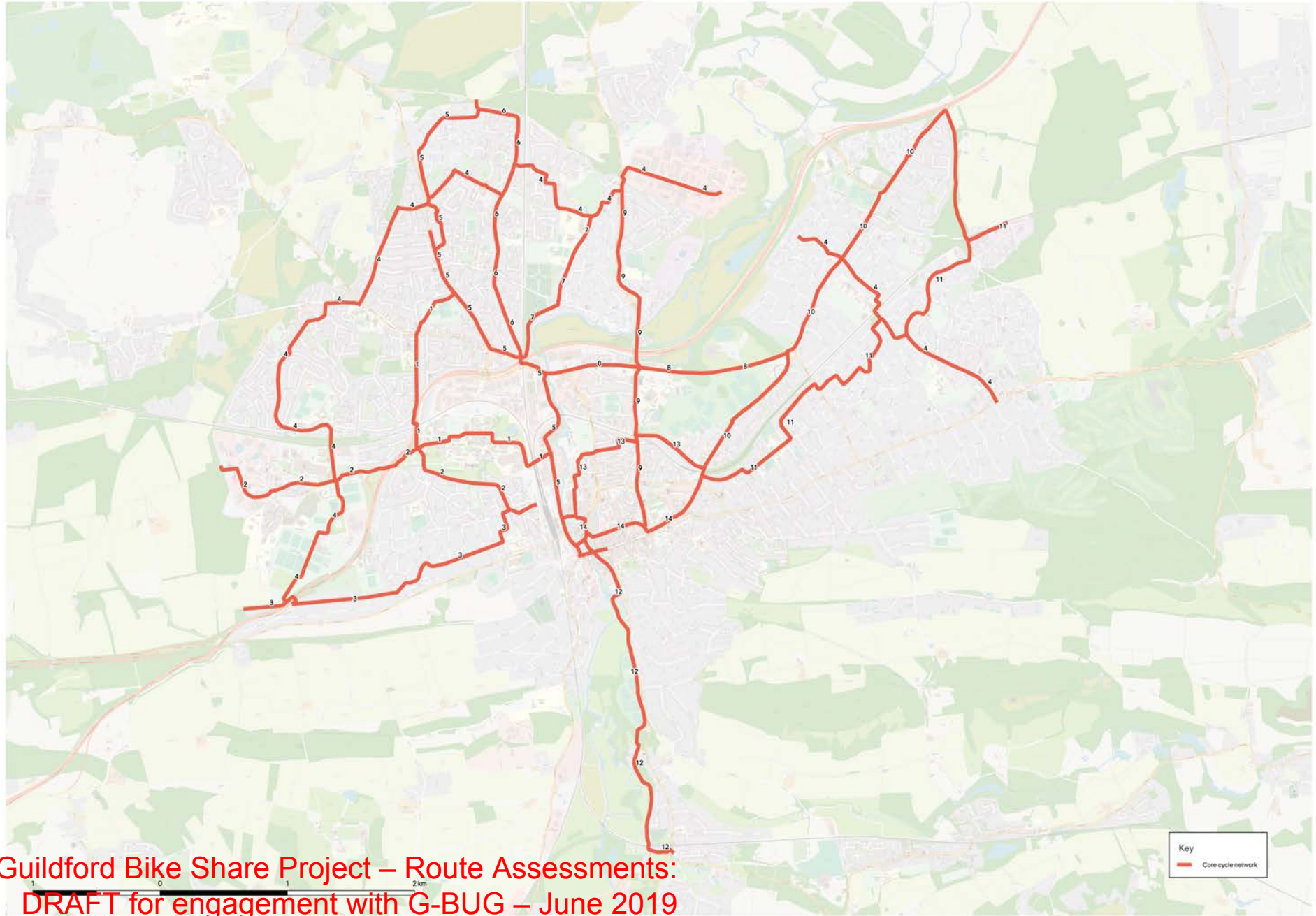
- Enjoyment
 - Cycling with friends
 - Cycling to relax
 - Cycling to enjoy nature

A network for who?

- Commuters
- Shoppers
- Women
- Men
- Children
- Young people
- Older people
- Families
- Businesses

The cycle network...

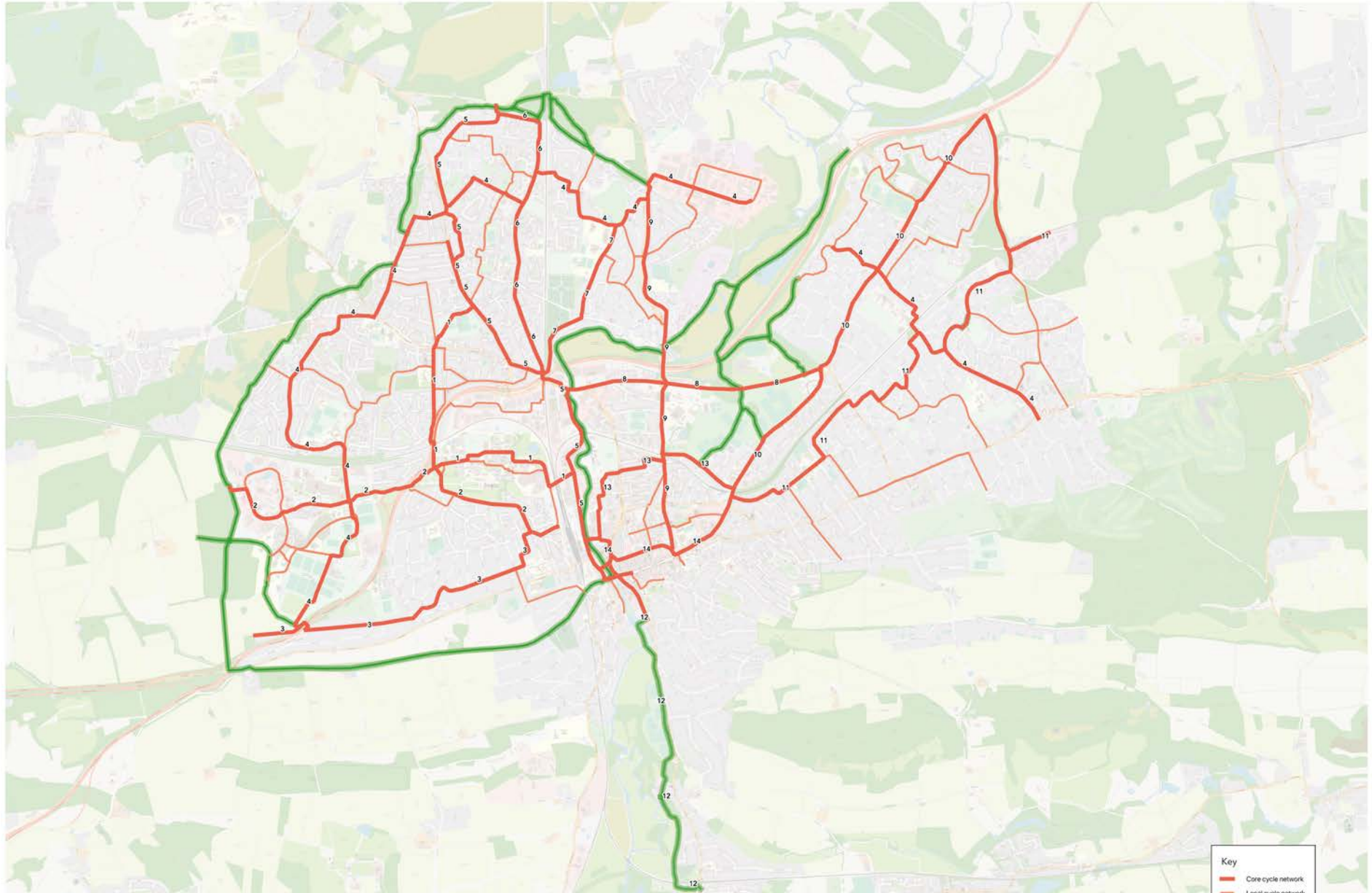
Guildford Cycle Network – core cycle network



Guildford Bike Share Project – Route Assessments:
DRAFT for engagement with G-BUG – June 2019

Key
Core cycle network

Guildford Cycle Network – all routes



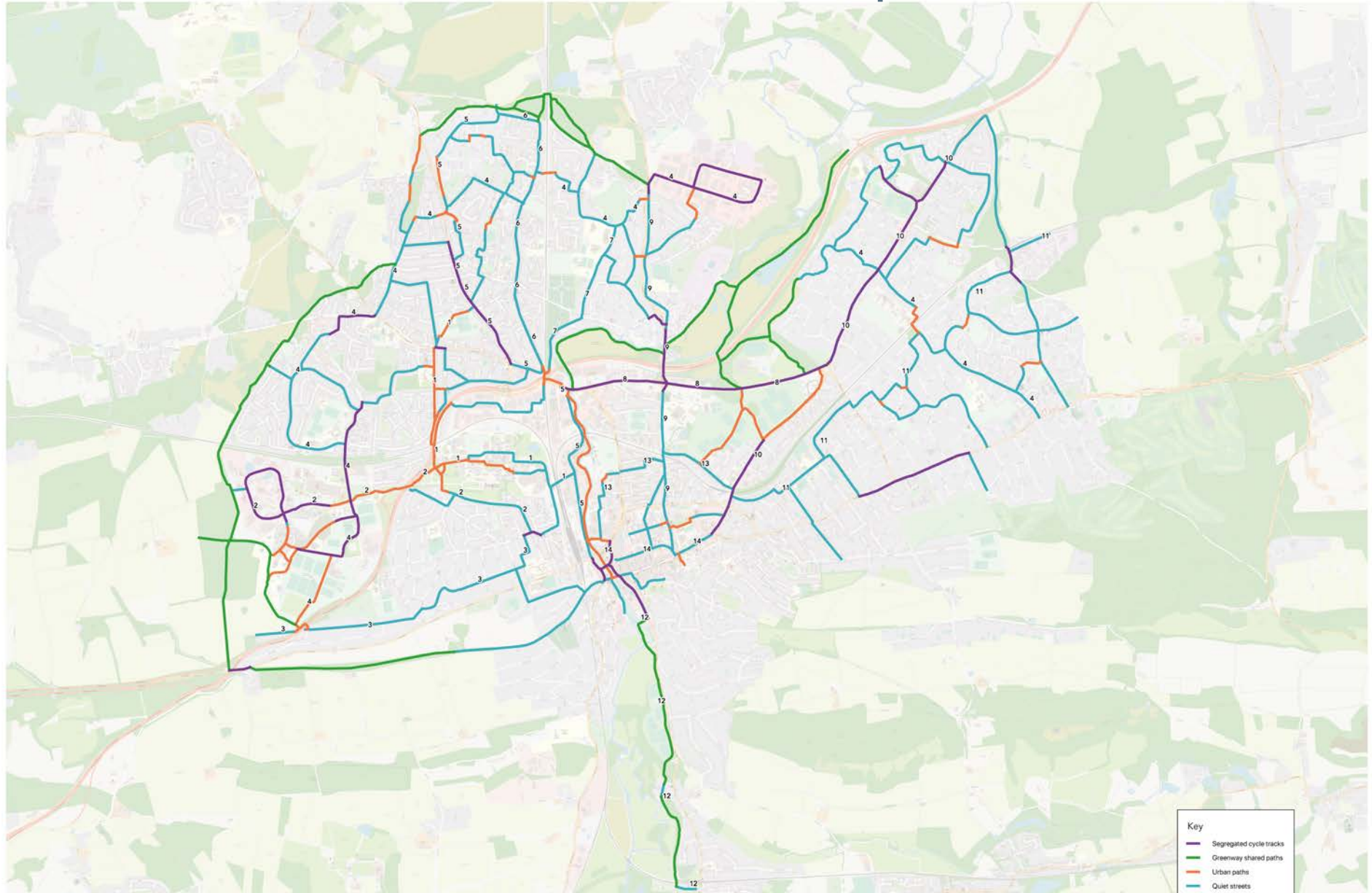
Key

- Core cycle network
- Local cycle network
- Greenway

Guildford Bike Share Project – Route Assessments:
DRAFT for engagement with G-BUG – June 2019



Guildford Cycle Network – route typologies



Guildford Bike Share Project – Route Assessments:
DRAFT for engagement with G-BUG – June 2019

Route typologies– segregated cycle tracks



Route typologies– segregated cycle tracks

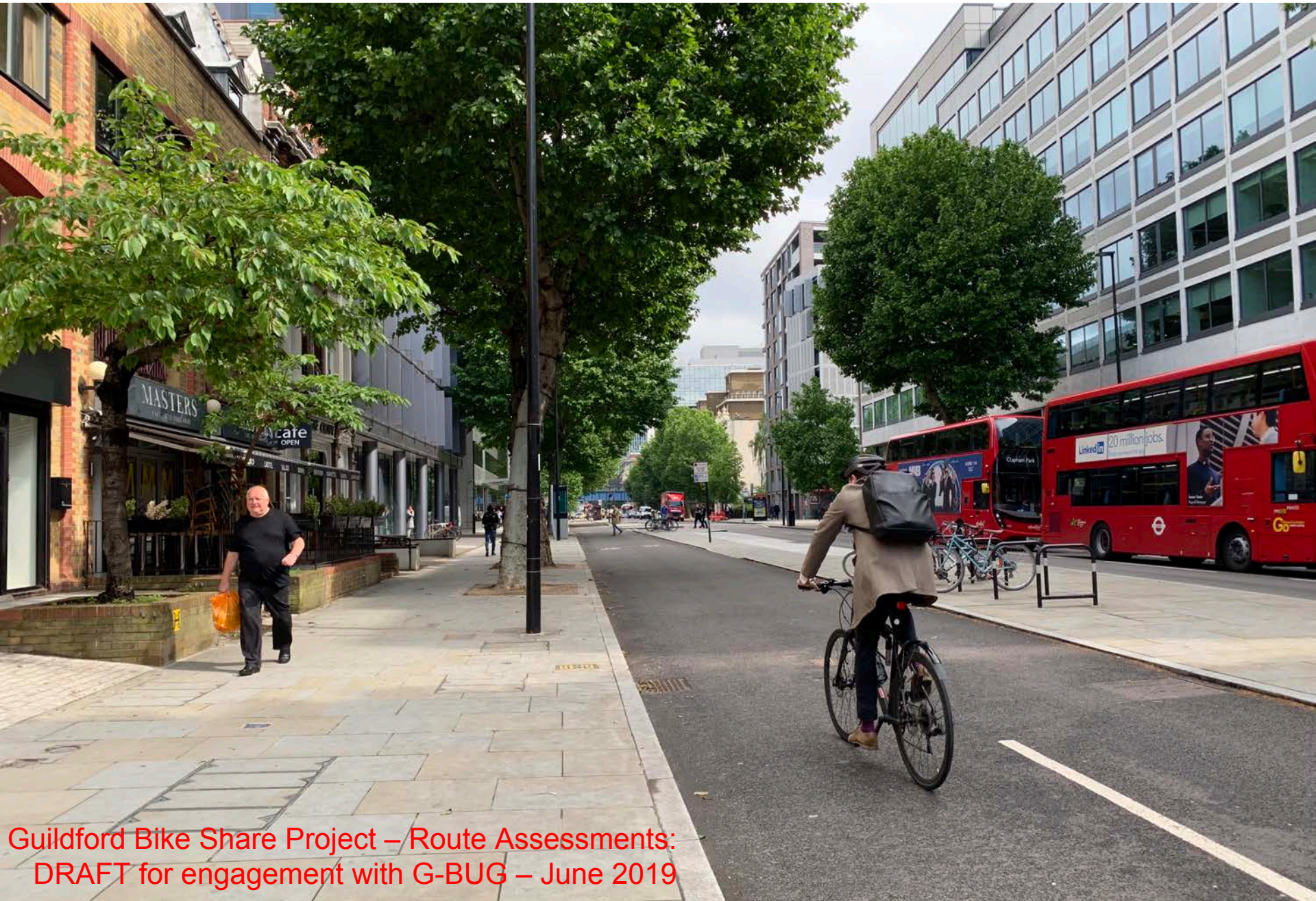


Route typologies– segregated cycle tracks



Guildford Bike Share Project – Route Assessments:
DRAFT for engagement with G-BUG – June 2019

Route typologies– segregated cycle tracks



Guildford Bike Share Project – Route Assessments:
DRAFT for engagement with G-BUG – June 2019

Route typologies– segregated cycle tracks



Route typologies– urban paths



Guildford Bike Share Project – Route Assessments:
DRAFT for engagement with G-BUG – June 2019

Route typologies– urban paths



Guildford Bike Share Project – Route Assessments:
DRAFT for engagement with G-BUG – June 2019

Route typologies– quiet streets



Route typologies– quiet streets



Route typologies– quiet streets



Route typologies– greenways



Route typologies– greenways



Guildford Bike Share Project – Route Assessments:
DRAFT for engagement with G-BUG – June 2019

Suggested interventions...

Potential interventions– junction improvements



Guildford Bike Share Project – Route Assessments:
DRAFT for engagement with G-BUG – June 2019

Suggested interventions: modal filters



Guildford Bike Share Project – Route Assessments:
DRAFT for engagement with G-BUG – June 2019

Suggested interventions: modal filters



Guildford Bike Share Project – Route Assessments:
DRAFT for engagement with G-BUG – June 2019

Suggested interventions: bus gates



Suggested interventions: bus gates



Guildford Bike Share Project – Route Assessments:
DRAFT for engagement with G-BUG – June 2019

Suggested interventions: bridges



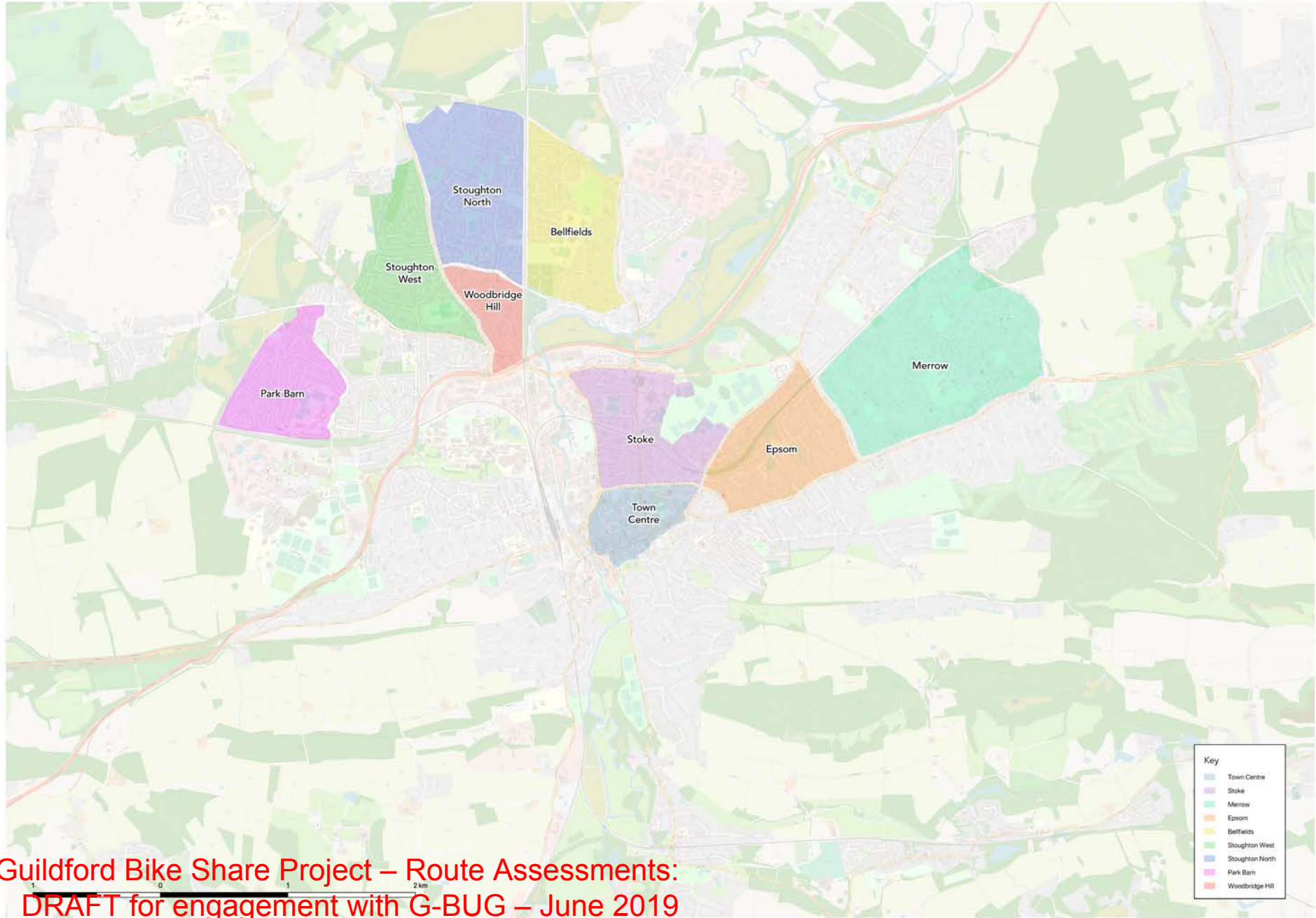
Guildford Bike Share Project – Route Assessments:
DRAFT for engagement with G-BUG – June 2019

Suggested interventions: bridges



Guildford Bike Share Project – Route Assessments:
DRAFT for engagement with G-BUG – June 2019

Suggested interventions: villages



Example: Bellfields Village (existing)

Bellfields Village Scheme - existing

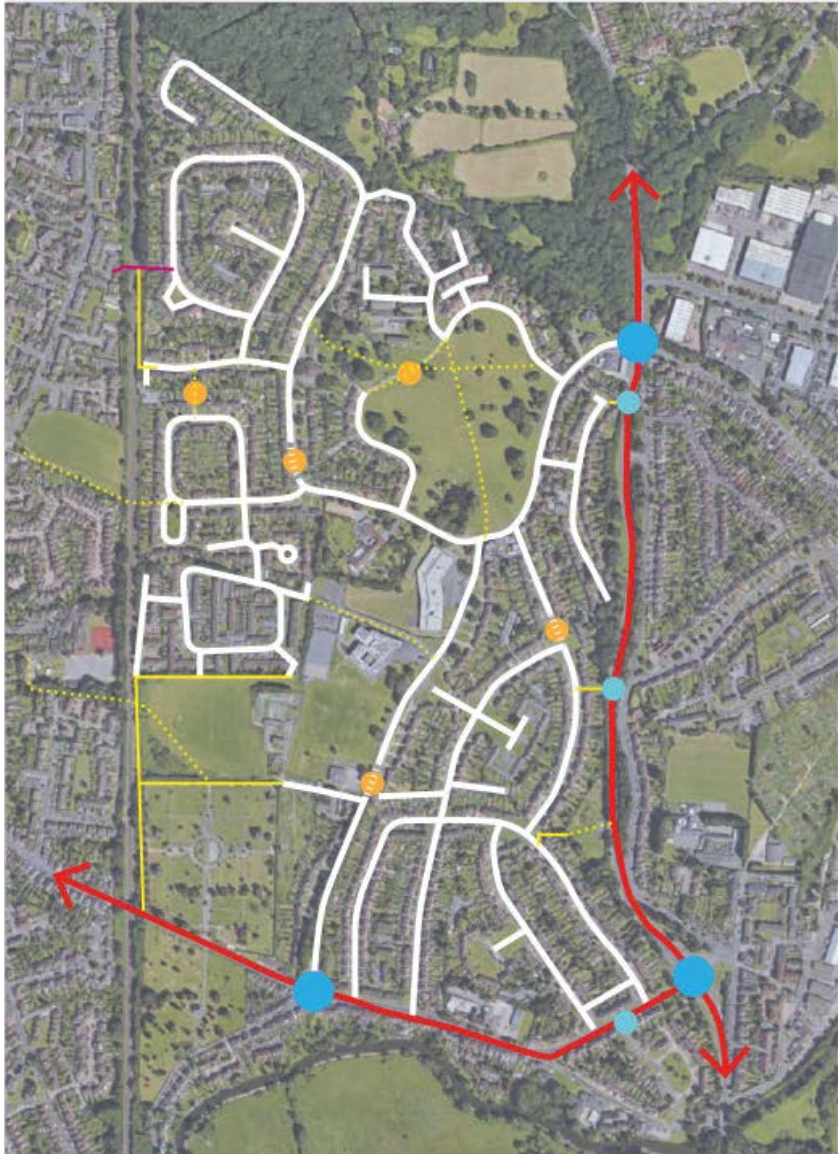
Key

	Strategic road network
	Internal street network (white)
	High traffic streets
	Internal paths
	Existing pedestrian/cycle bridge
	Modal filters
	Bus gates (white)
	New pedestrian/cycle connections
	Junction improvements
	New/improved cycle/pedestrian crossing



Example: Bellfields Village (proposed)

Bellfields Village Scheme - proposed



Key

	Strategic road network
	Internal street network (white)
	High traffic streets
	Internal paths
	Existing pedestrian/cycle bridge
	Modal filters
	Bus gates (white)
	New pedestrian/cycle connections
	Junction improvements
	New/improved cycle/pedestrian crossing

Example— Aldershot Rd + Northway/Southway



Guildford Bike Share Project – Route Assessments
DRAFT for engagement with G-BUG – June 2019

Example– Aldershot Rd + Northway/Southway



Guildford Bike Share Project – Route Assessments:
DRAFT for engagement with G-BUG – June 2019

Example– Aldershot Rd + Northway/Southway



Example– Aldershot Rd + Northway/Southway

